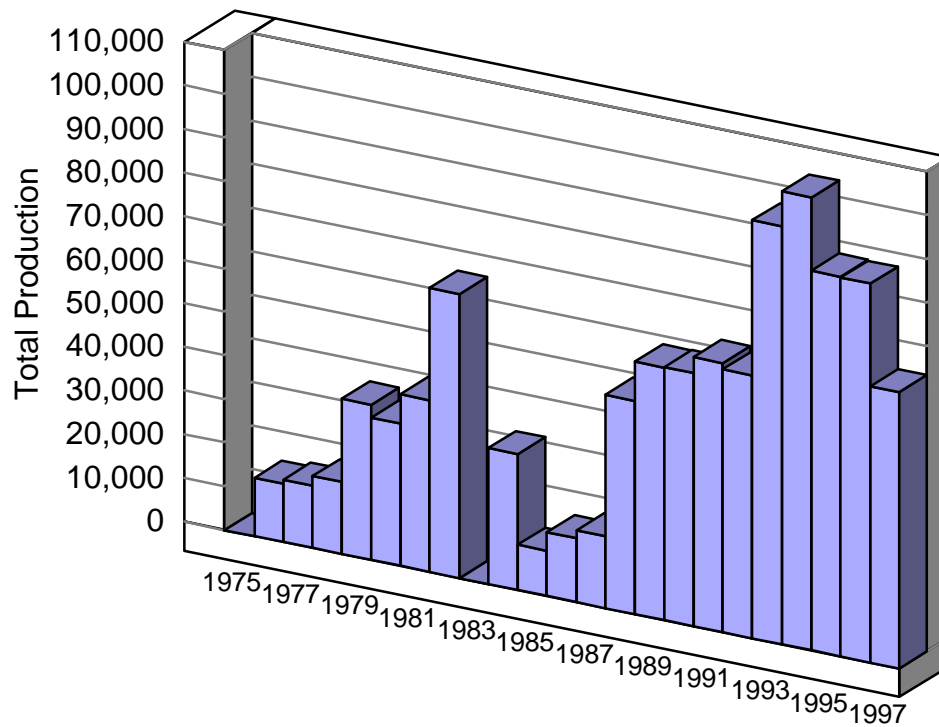


# Utah Firearms Production 1975-1997

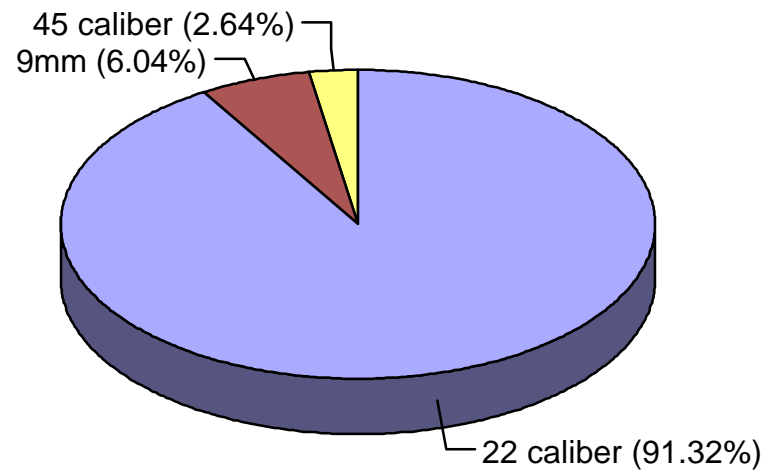


### Utah Pistol Production

Year	Caliber						Total
	.22	.25	.32	.380	9mm	.45	
1982	10,276	0	0	0	0	0	10,276
1983	0	0	0	0	0	0	0
1984	12,981	0	0	0	0	0	12,981
1985	10,504	0	0	0	0	0	10,504
1986	13,907	0	0	0	0	754	14,661
1987	15,211	0	0	0	0	1,247	16,458
1988	18,814	0	0	0	0	1,195	20,009
1989	26,717	0	0	0	0	2,030	28,747
1990	30,927	0	0	0	0	1,709	32,636
1991	33,153	0	0	0	32	650	33,835
1992	30,365	0	0	0	0	421	30,786
1993	37,830	0	0	0	4,728	964	43,522
1994	41,652	0	0	0	6,460	910	49,022
1995	44,897	0	0	0	6,634	1,263	52,794
1996	39,702	0	0	0	6,825	171	46,698
1997	25,847	0	0	0	1,295	48	27,190
<b>Total</b>	<b>392,783</b>	<b>0</b>	<b>0</b>	<b>0</b>	<b>25,974</b>	<b>11,362</b>	<b>430,119</b>

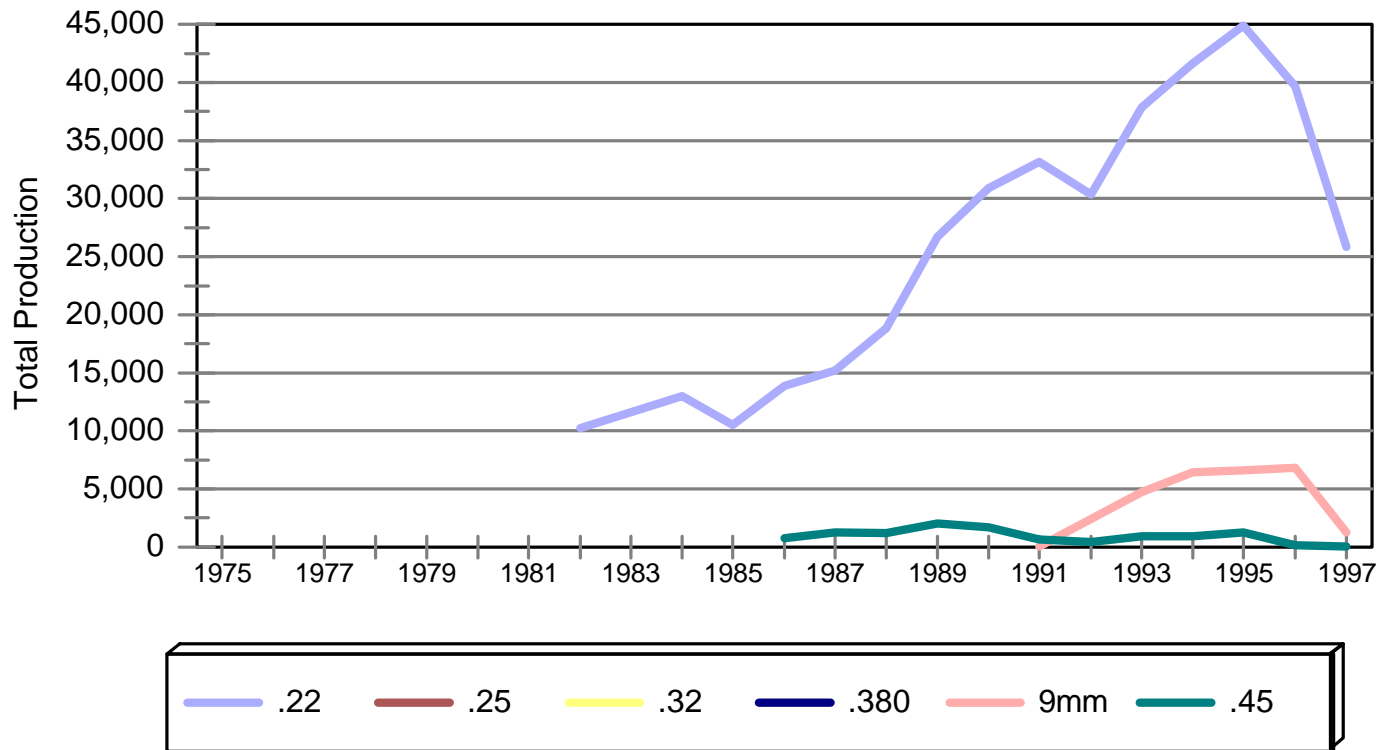
# Utah Pistol Production

## By Caliber, 1975-1997



# Utah Pistol Production

## By Caliber, 1975-1997



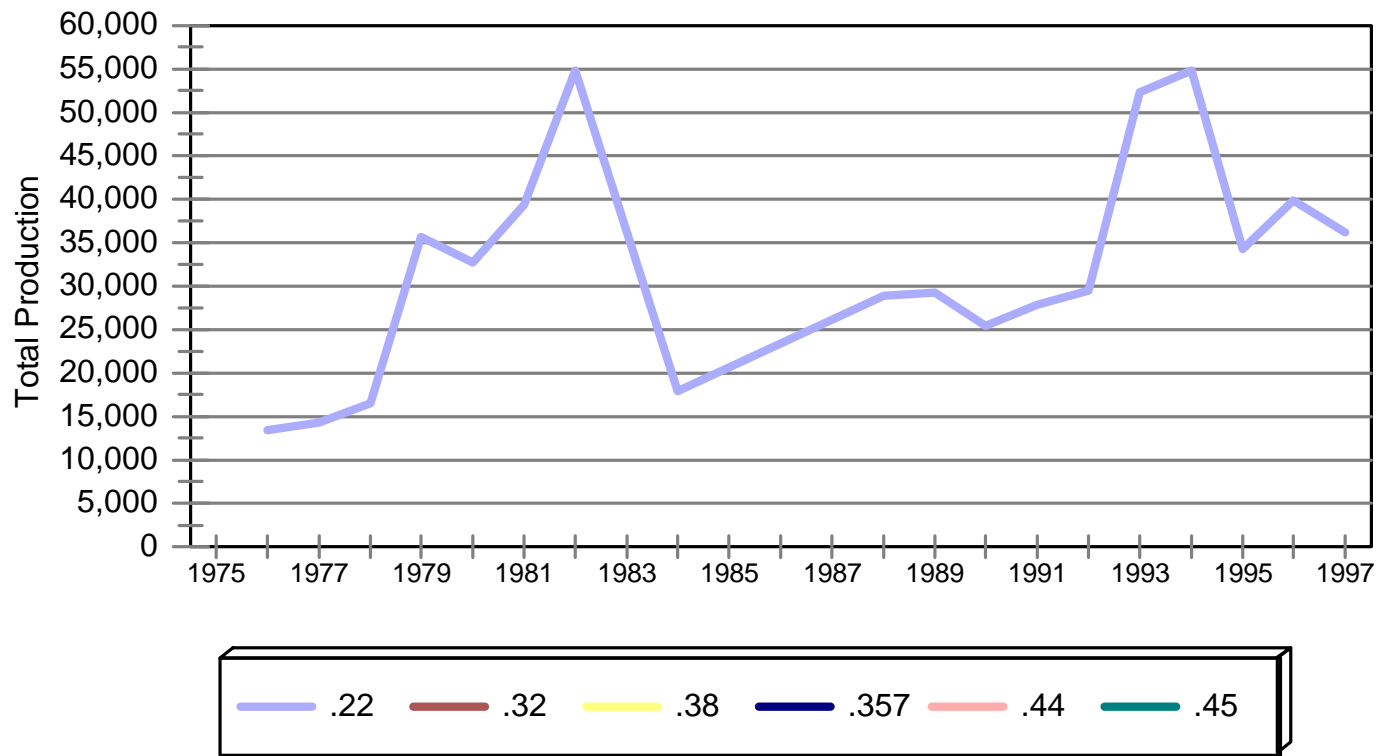
### Utah Revolver Production

Year	Caliber						Total
	.22	.32	.38	.357	.44	.45	
1976	13,435	0	0	0	0	0	13,435
1977	14,281	0	0	0	0	0	14,281
1978	16,530	0	0	0	0	0	16,530
1979	35,631	0	0	0	0	0	35,631
1980	32,711	0	0	0	0	0	32,711
1981	39,361	0	0	0	0	0	39,361
1982	54,796	0	0	0	0	0	54,796
1983	0	0	0	0	0	0	0
1984	17,901	0	0	0	0	266	18,167
1985	0	0	0	0	0	0	0
1986	0	0	0	0	0	0	0
1987	0	0	0	0	0	0	0
1988	28,892	0	0	0	0	0	28,892
1989	29,264	0	0	0	0	0	29,264
1990	25,422	0	0	0	0	0	25,422
1991	27,833	0	0	0	0	0	27,833
1992	29,502	0	0	0	0	0	29,502
1993	52,342	0	0	0	0	0	52,342

Year	Caliber						Total
	.22	.32	.38	.357	.44	.45	
1994	54,830	0	0	0	0	0	54,830
1995	34,265	0	0	0	0	0	34,265
1996	39,832	0	0	0	0	0	39,832
1997	36,194	0	0	0	0	0	36,194
<b>Total</b>	<b>583,022</b>	<b>0</b>	<b>0</b>	<b>0</b>	<b>0</b>	<b>266</b>	<b>583,288</b>

# Utah Revolver Production

## By Caliber, 1975-1997



Utah Long Gun Production

Year	Rifle	Shotgun	Total
1996	243	0	243
1997	0	0	0
Total	243	0	243