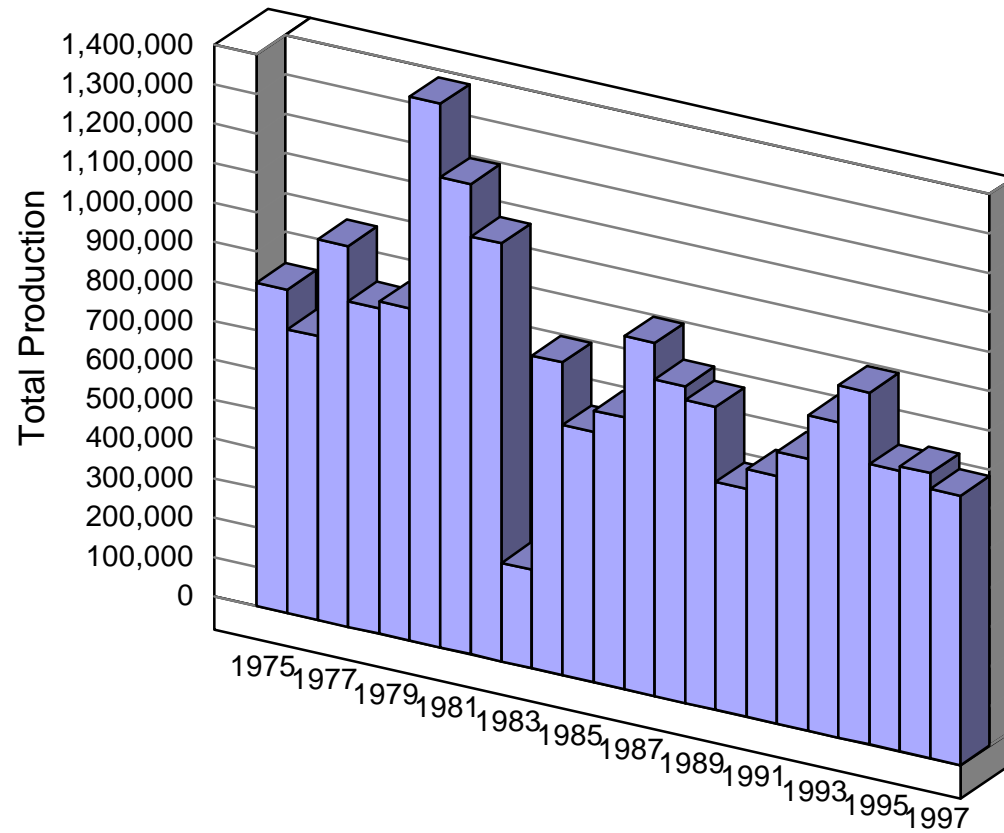


# Massachusetts Firearms Production 1975-1997

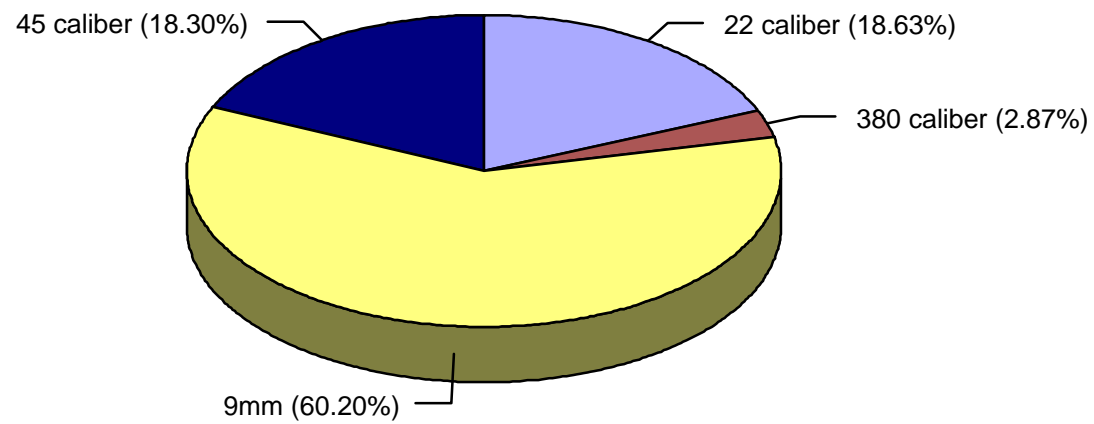


### Massachusetts Pistol Production

Year	Caliber						Total
	.22	.25	.32	.380	9mm	.45	
1975	2,181	0	0	66	35,537	0	37,784
1976	695	0	0	0	53,714	0	54,409
1977	2,939	0	0	563	61,010	0	64,512
1978	2,946	0	0	905	44,560	0	48,411
1979	6,898	0	0	1,772	53,797	0	62,467
1980	19,568	0	0	1,669	50,425	0	71,662
1981	11,808	0	0	2,621	60,637	0	75,066
1982	5,538	0	0	2,956	62,302	0	70,796
1983	2,054	0	0	502	13,286	0	15,842
1984	3,612	0	0	469	47,757	0	51,838
1985	7,530	0	0	368	36,790	0	44,688
1986	3,442	0	0	751	37,021	22,283	63,497
1987	29,384	0	0	821	74,837	33,792	138,834

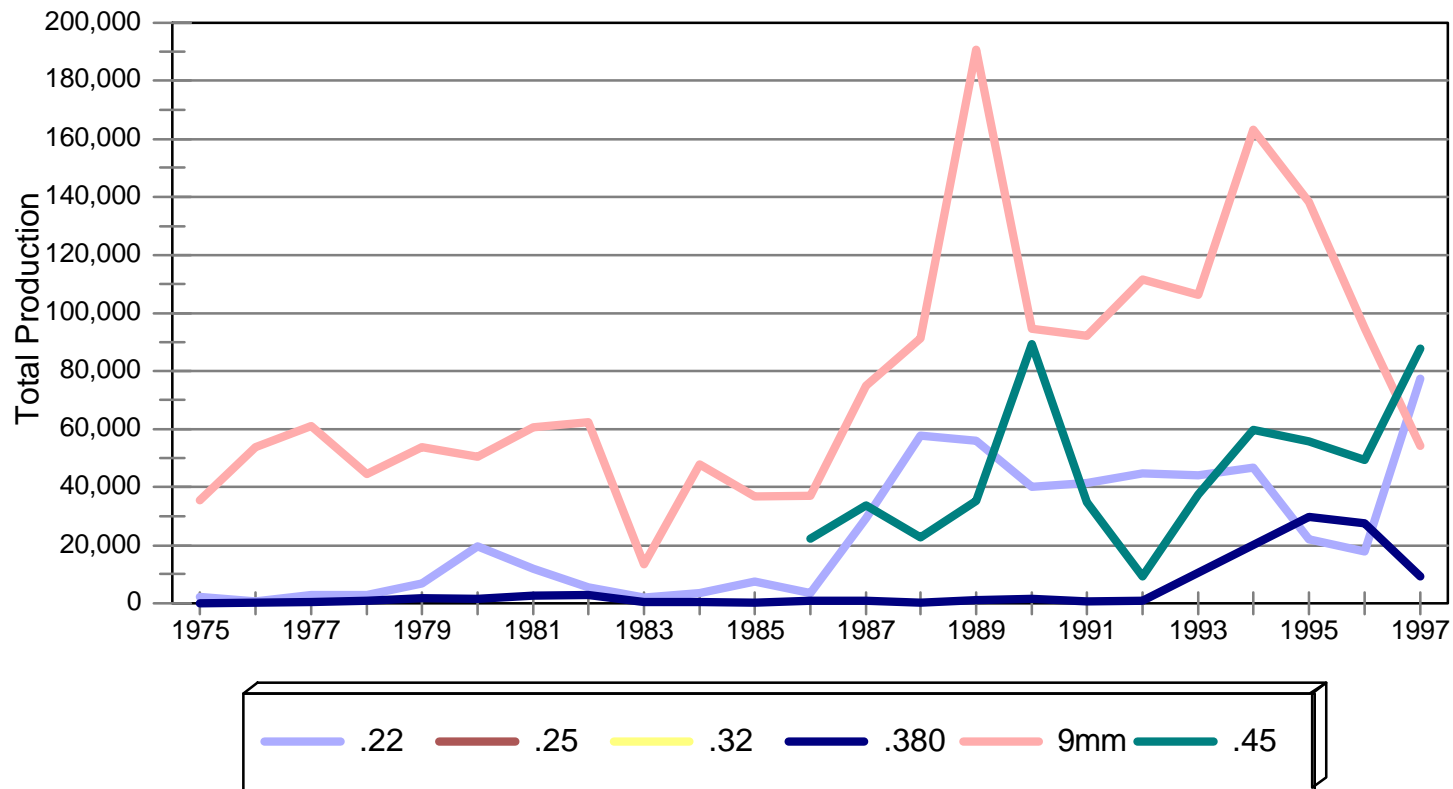
Year	Caliber						Total
	.22	.25	.32	.380	9mm	.45	
1988	57,729	0	0	119	91,277	22,815	171,940
1989	56,017	0	0	1,150	190,753	35,349	283,269
1990	40,303	0	0	1,677	94,529	89,375	225,884
1991	41,410	0	0	700	92,141	34,836	169,087
1992	44,841	0	0	805	111,580	9,249	166,475
1993	44,013	0	0	0	106,405	37,575	187,993
1994	46,785	0	0	0	163,021	59,743	269,549
1995	22,136	0	0	29,604	138,166	55,773	245,679
1996	18,002	0	0	27,570	94,759	49,311	189,642
1997	77,412	0	0	9,178	54,288	87,673	228,551
<b>Total</b>	<b>547,243</b>	<b>0</b>	<b>0</b>	<b>84,266</b>	<b>1,768,592</b>	<b>537,774</b>	<b>2,937,875</b>

# Massachusetts Pistol Production By Caliber, 1975-1997



# Massachusetts Pistol Production

## By Caliber, 1975-1997



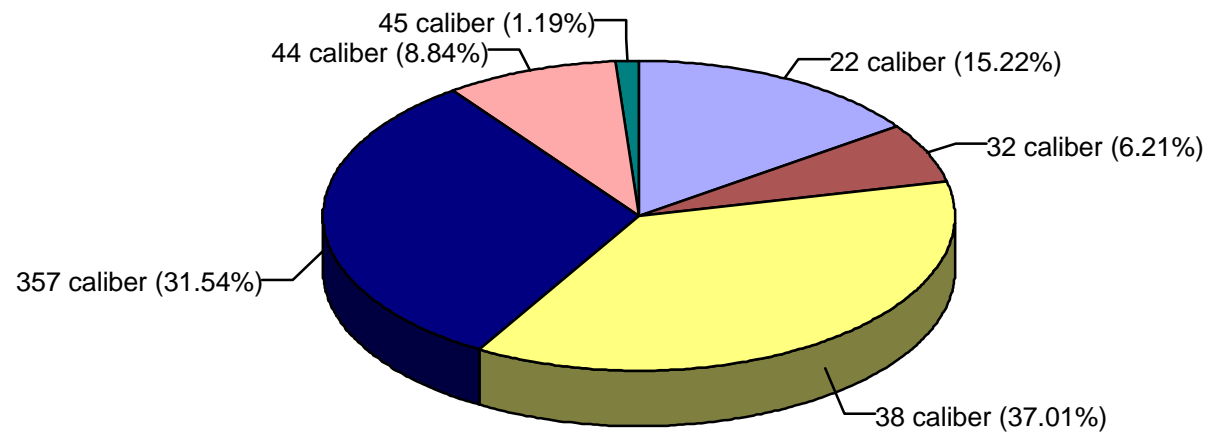
## Massachusetts Revolver Production

Year	Caliber						Total
	.22	.32	.38	.357	.44	.45	
<b>1975</b>	109,224	65,494	290,455	129,836	23,407	1,347	<b>619,763</b>
<b>1976</b>	78,900	41,107	324,739	128,982	21,275	5,995	<b>600,998</b>
<b>1977</b>	197,963	42,177	320,664	158,180	38,659	2,707	<b>760,350</b>
<b>1978</b>	116,187	32,980	305,912	176,037	43,448	7,036	<b>681,600</b>
<b>1979</b>	104,786	33,389	247,189	209,876	48,059	5,895	<b>649,194</b>
<b>1980</b>	265,938	148,788	173,909	233,475	54,153	21,686	<b>897,949</b>
<b>1981</b>	214,792	108,193	276,884	213,079	57,663	8,053	<b>878,664</b>
<b>1982</b>	124,306	49,319	341,828	235,109	41,264	5,564	<b>797,390</b>
<b>1983</b>	13,214	4,940	92,212	64,037	8,188	252	<b>182,843</b>
<b>1984</b>	49,451	25,769	196,357	207,250	59,034	3,473	<b>541,334</b>
<b>1985</b>	39,601	15,581	146,346	185,183	93,146	8,509	<b>488,366</b>
<b>1986</b>	15,998	4,110	109,804	273,622	79,288	4,386	<b>487,208</b>
<b>1987</b>	14,382	2,374	150,555	200,061	55,976	1,348	<b>424,696</b>

Year	Caliber						Total
	.22	.32	.38	.357	.44	.45	
<b>1988</b>	42,233	18,527	105,173	175,069	65,070	145	<b>406,217</b>
<b>1989</b>	35,933	14,099	102,345	95,926	44,019	17,999	<b>310,321</b>
<b>1990</b>	30,961	19,762	102,963	86,443	30,289	12,867	<b>283,285</b>
<b>1991</b>	23,707	9,154	103,638	95,518	39,798	5,181	<b>276,996</b>
<b>1992</b>	29,348	9,863	111,026	94,213	31,507	1,473	<b>277,430</b>
<b>1993</b>	33,848	9,561	122,541	93,432	22,261	3,394	<b>285,037</b>
<b>1994</b>	30,330	7,939	109,398	103,846	27,910	2,261	<b>281,684</b>
<b>1995</b>	17,607	3,140	80,178	136,247	29,534	2,158	<b>268,864</b>
<b>1996</b>	22,954	2,132	105,094	78,237	20,263	5,583	<b>234,263</b>
<b>1997</b>	32,597	1,942	78,339	32,765	20,222	812	<b>166,677</b>
<b>Total</b>	<b>1,644,260</b>	<b>670,340</b>	<b>3,997,549</b>	<b>3,406,423</b>	<b>954,433</b>	<b>128,124</b>	<b>10,801,129</b>

# Massachusetts Revolver Production

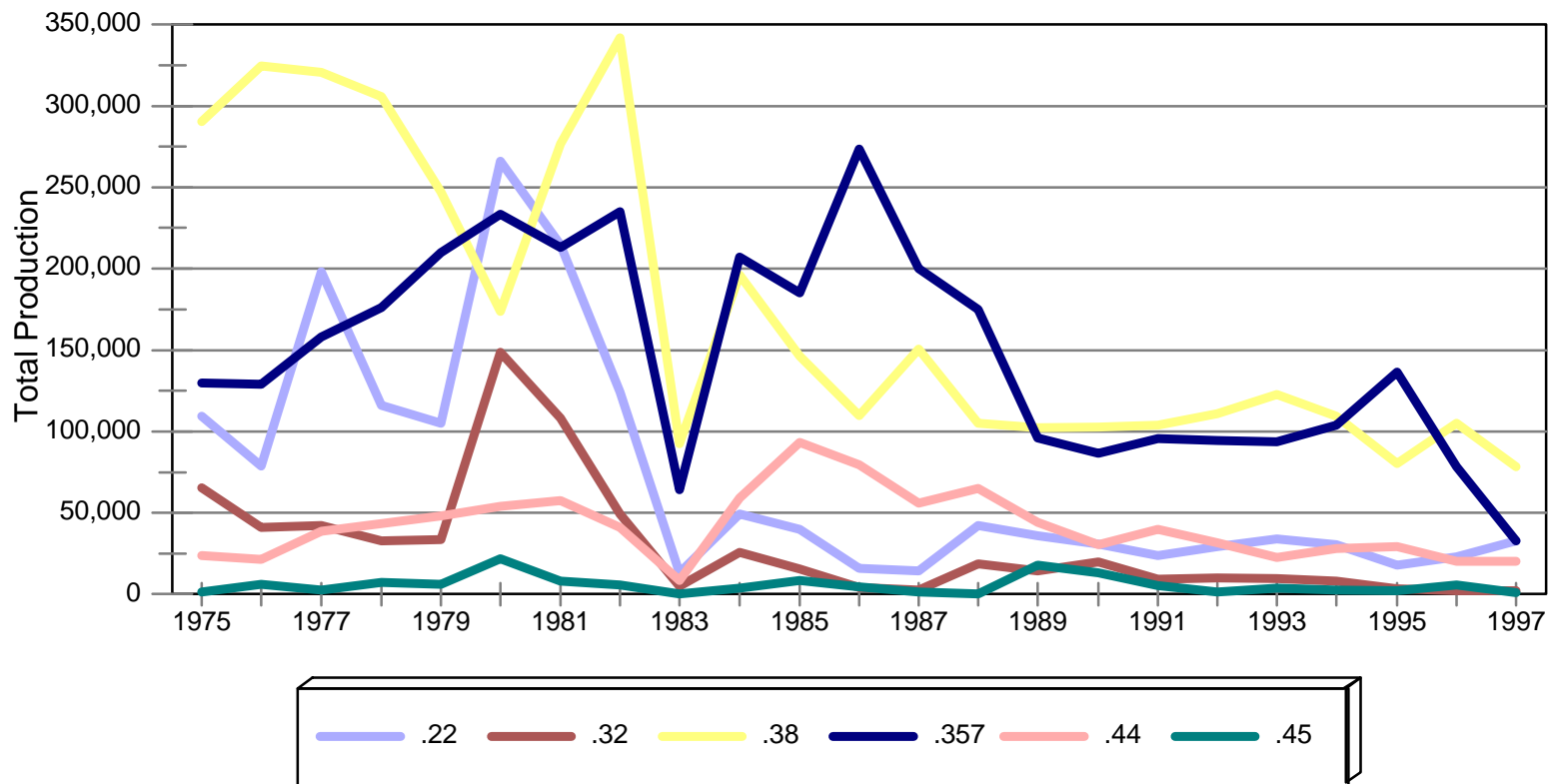
## By Caliber, 1975-1997





# Massachusetts Revolver Production

## By Caliber, 1975-1997



## Massachusetts Long Gun Production

Year	Rifle	Shotgun	Total
<b>1975</b>	11,681	151,473	<b>163,154</b>
<b>1976</b>	4,801	60,032	<b>64,833</b>
<b>1977</b>	18,200	123,524	<b>141,724</b>
<b>1978</b>	12,368	83,144	<b>95,512</b>
<b>1979</b>	2,502	128,917	<b>131,419</b>
<b>1980</b>	12,375	398,089	<b>410,464</b>
<b>1981</b>	11,959	228,639	<b>240,598</b>
<b>1982</b>	11,338	181,613	<b>192,951</b>
<b>1983</b>	1,993	50,190	<b>52,183</b>
<b>1984</b>	5,958	195,285	<b>201,243</b>
<b>1985</b>	5,233	97,298	<b>102,531</b>
<b>1986</b>	48,912	89,102	<b>138,014</b>

Year	Rifle	Shotgun	Total
<b>1987</b>	65,440	266,904	<b>332,344</b>
<b>1988</b>	46,752	178,799	<b>225,551</b>
<b>1989</b>	78,981	95,344	<b>174,325</b>
<b>1990</b>	5,065	64,363	<b>69,428</b>
<b>1991</b>	58,550	123,460	<b>182,010</b>
<b>1992</b>	66,283	180,493	<b>246,776</b>
<b>1993</b>	83,196	244,377	<b>327,573</b>
<b>1994</b>	123,666	218,360	<b>342,026</b>
<b>1995</b>	31,130	165,813	<b>196,943</b>
<b>1996</b>	128,766	171,782	<b>300,548</b>
<b>1997</b>	100,946	188,815	<b>289,761</b>
<b>Total</b>	<b>936,095</b>	<b>3,685,816</b>	<b>4,621,911</b>

# Massachusetts Long Gun Production

## 1975-1997

