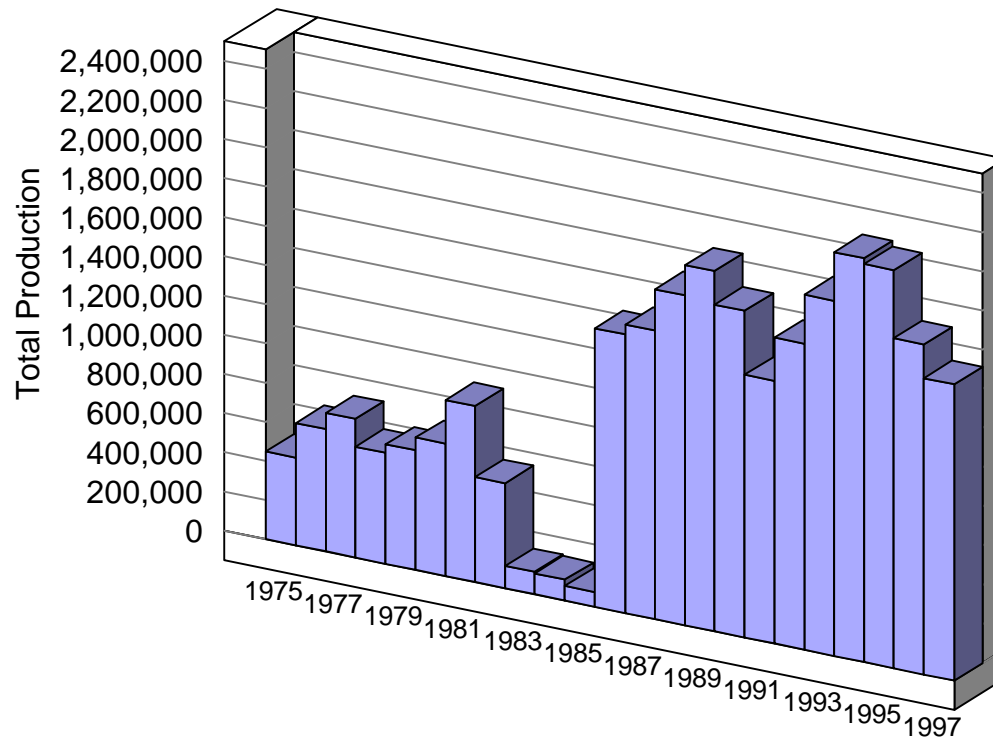


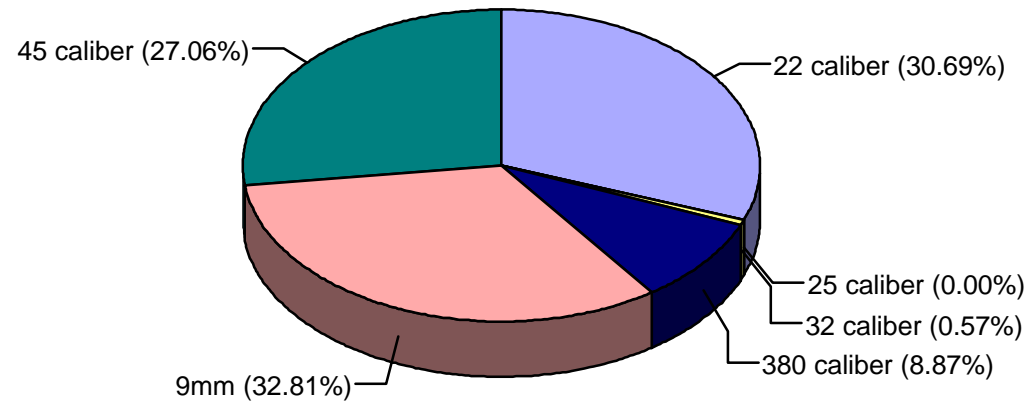
Connecticut Firearms Production 1975-1997



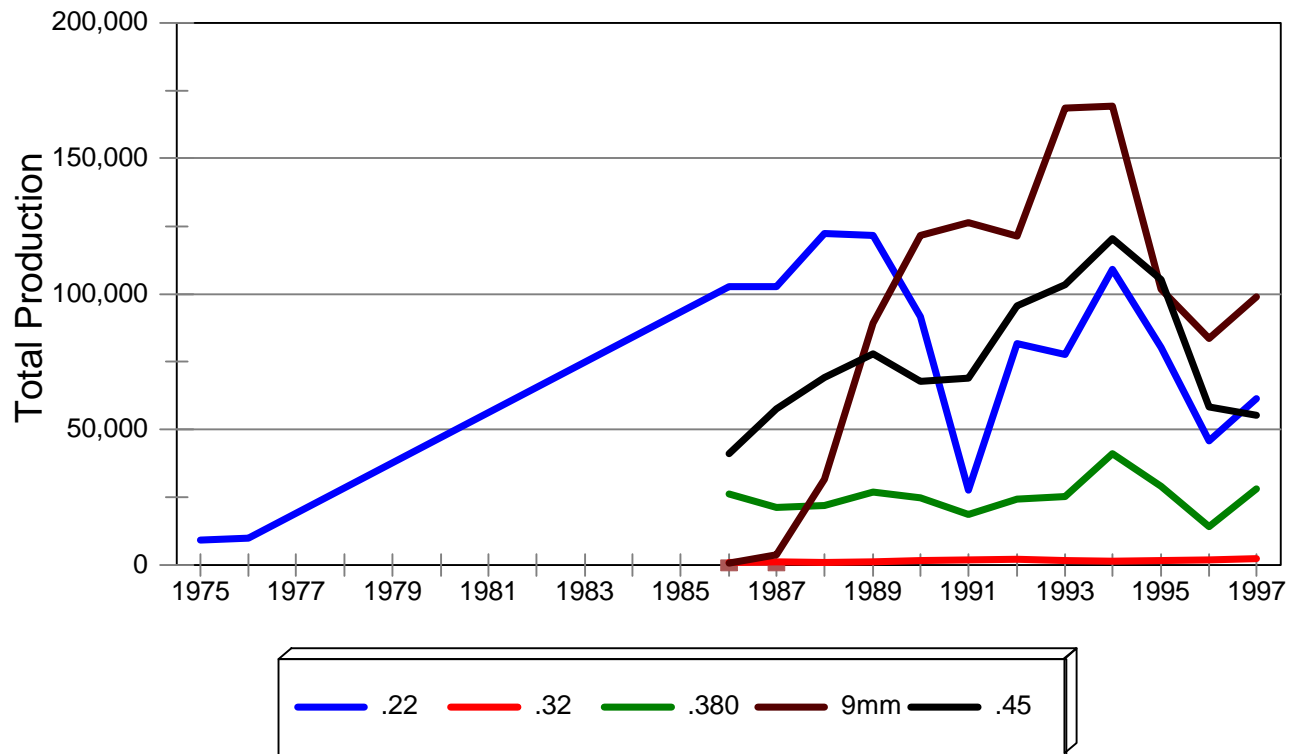
Connecticut Pistol Production

Year	Caliber						Total
	.22	.25	.32	.380	9mm	.45	
1975	9,250	0	0	0	0	0	9,250
1976	10,112	0	0	0	0	0	10,112
<i>No Production Data Reported 1977-1985</i>							
1986	102,820	5	821	26,117	680	41,190	171,633
1987	102,754	4	1,211	21,254	3,806	57,695	186,724
1988	122,360	0	1,145	21,872	31,567	69,246	246,190
1989	121,652	0	1,322	27,065	89,167	77,926	317,132
1990	91,590	0	1,738	24,738	121,676	67,735	307,477
1991	27,587	0	1,873	18,740	126,218	68,845	243,263
1992	81,681	0	2,052	24,310	121,208	95,589	324,840
1993	77,743	0	1,829	25,156	168,586	103,371	376,685
1994	109,084	0	1,329	41,186	169,242	120,355	441,196
1995	80,391	0	1,683	28,976	101,591	105,163	317,804
1996	45,716	0	1,982	14,330	83,630	58,173	203,831
1997	61,349	0	2,310	28,102	99,074	55,310	246,145
Total	1,044,089	9	19,295	301,846	1,116,445	920,598	3,402,282

Connecticut Pistol Production By Caliber, 1975-1997



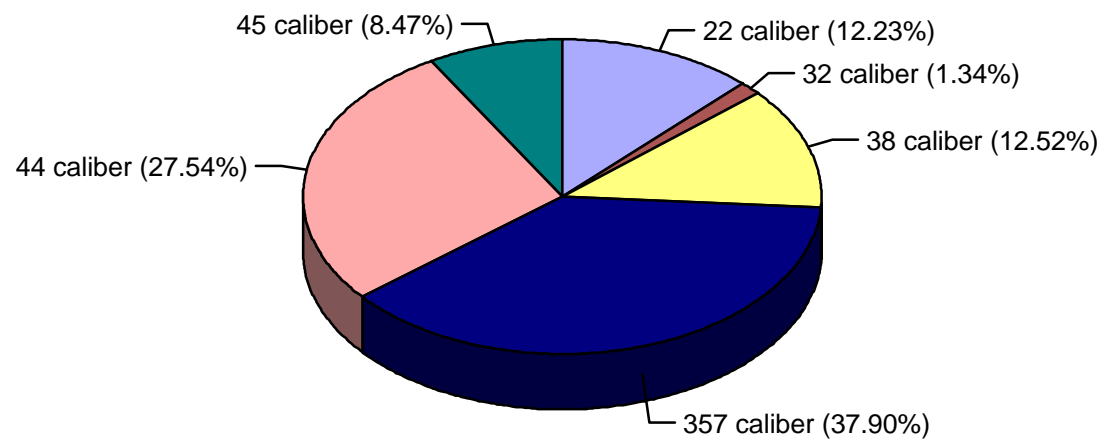
Connecticut Pistol Production By Caliber, 1975-1997



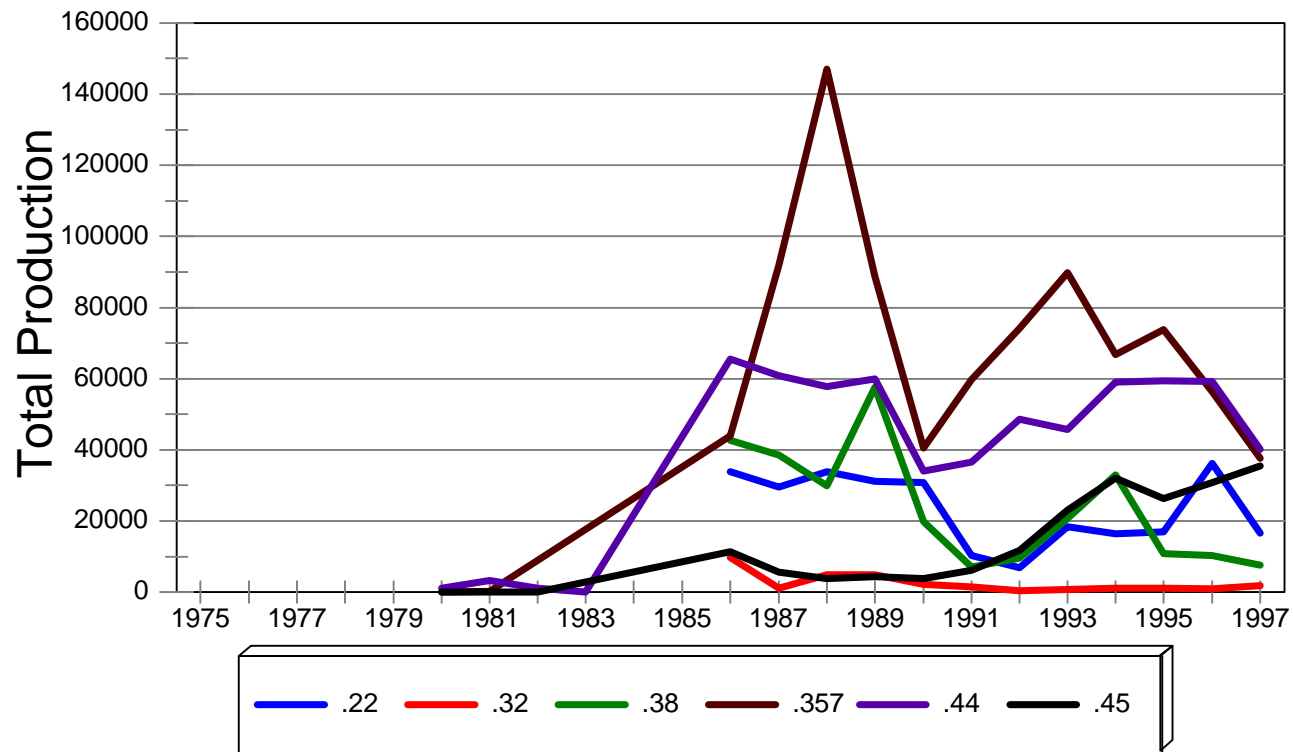
Connecticut Revolver Production

Year	Caliber						Total
	.22	.32	.38	.357	.44	.45	
1980	0	0	0	97	1,022	96	1,215
1981	0	0	0	328	3,345	34	3,707
1982	0	0	0	0	1,045	66	1,111
1983	0	0	0	0	75	0	75
1984	0	0	0	0	0	0	0
1985	0	0	0	0	0	0	0
1986	33,899	9,676	42,694	43,927	65,585	11,337	207,118
1987	29,642	1,070	38,672	92,089	60,891	5,620	227,984
1988	33,852	4,870	29,856	147,145	57,814	3,866	277,403
1989	31,063	5,042	57,609	88,769	60,082	4,395	246,960
1990	30,845	2,241	19,788	40,545	34,032	3,851	131,302
1991	10,392	1,442	7,139	59,688	36,627	6,149	121,437
1992	6,887	371	9,607	74,157	48,565	11,742	151,329
1993	18,495	855	20,662	89,703	45,779	22,946	198,440
1994	16,406	1,218	32,972	66,691	59,053	31,966	208,306
1995	16,901	1,238	10,706	73,929	59,507	26,243	188,524
1996	36,134	945	10,326	56,323	59,196	30,781	193,705
1997	16,586	1,932	7,596	37,706	40,218	35,503	139,541
Total	281,102	30,900	287,627	871,097	632,836	194,595	2,298,157

Connecticut Revolver Production By Caliber, 1975-1997



Connecticut Revolver Production By Caliber, 1975-1997



Connecticut Long Gun Production

Year	Rifle	Shotgun	Total
1975	418,793	20,631	439,424
1976	583,787	31,066	614,853
1977	674,768	32,295	707,063
1978	543,470	23,653	567,123
1979	588,856	21,774	610,630
1980	657,280	16,655	673,935
1981	864,675	31,597	896,272
1982	527,263	9,408	536,671
1983	114,202	1,251	115,453
1984	43,190	63,082	106,272
1985	31,398	44,753	76,151
1986	693,257	350,378	1,043,635

Year	Rifle	Shotgun	Total
1987	689,130	368,229	1,057,359
1988	756,368	405,311	1,161,679
1989	863,403	411,905	1,275,308
1990	806,386	425,380	1,231,766
1991	631,690	345,834	977,524
1992	748,122	338,627	1,086,749
1993	809,363	430,852	1,240,215
1994	879,992	532,776	1,412,768
1995	1,006,411	519,595	1,526,006
1996	903,215	384,990	1,288,205
1997	768,291	358,773	1,127,064
Total	14,603,310	5,168,815	19,772,125

Connecticut Long Gun Production 1975-1997

